

专业外语

Professional English in Architecture

李韵琴

南昌大学建筑与设计学院

2023年3月4日



《专业外语》教学大纲

1. 课程概论 (2月26日)
2. 建筑类专业词汇与口语表达技巧(2月29日)
3. 视听训练及研讨(3月4日)
4. 视听训练及研讨(3月7日)
5. 视听训练及研讨(3月11日)
6. 互动作业汇报(3月14日)
7. 互动作业汇报(3月18日)
8. 互动作业汇报(3月21日)
9. 视听训练及研讨(3月25日)
10. 专业文献精读(3月28日)
11. 科技论文写作技巧(4月1日)
12. 期末考试(4月4日)



视听训练及研讨

第三讲



Architects VS AI?



AI Art with
Midjourney





of the design process and will lead to the design of a 280
最终设计出一座 280

播放 (k)

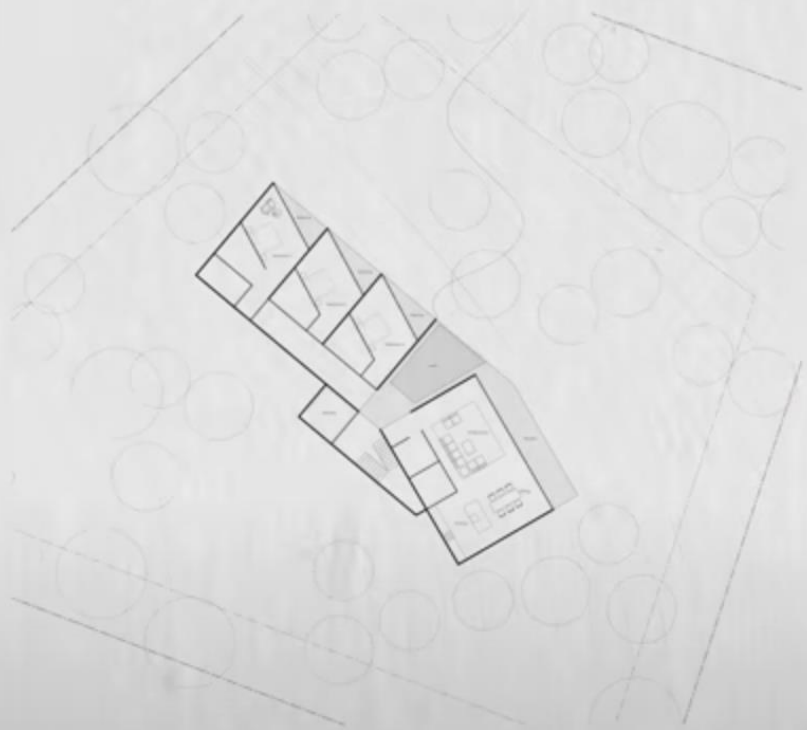
▶ ⏪ 🔊 1:01 / 14:19 · INTRO >

6

🇨🇳 双语字幕

🔍 ⚙️ 📄 🖥️ 🗑️ 🗉

HUMANS



32%

AI



68%

HUMANS



38%

AI



62%

HUMANS

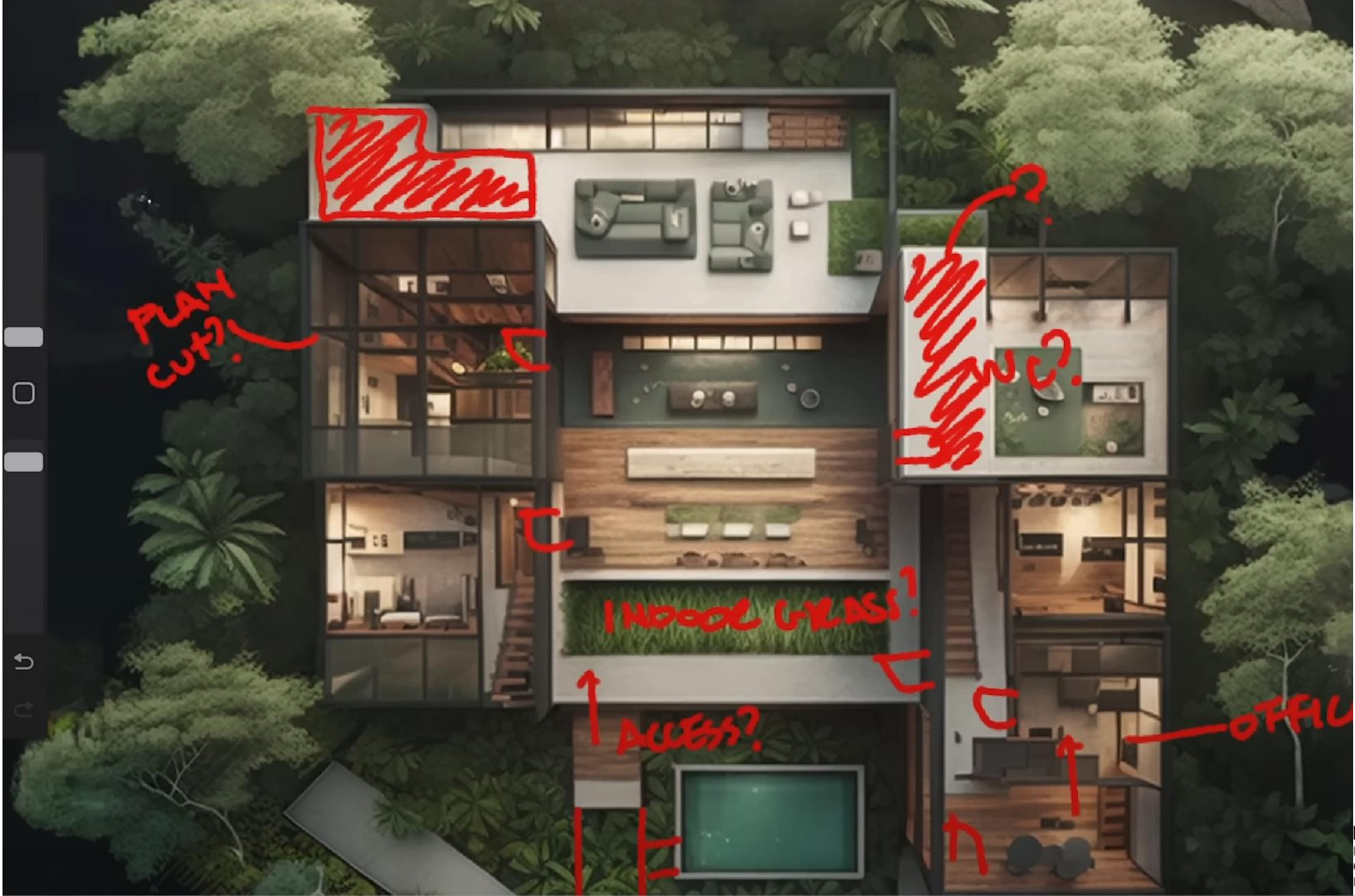
Wedged into the side of a hill, the 280sm house invites you to experience the elements - the mass of the earth, the movement of water, and the lightness of air. The central focus of the design rests on the entry experience - the boundary between the foreign and domestic worlds - and is heightened by the refraction of water from the pool above, and the 7m tall concrete walls that narrow as you approach the door. Upon entering the building, residents are directed to the second floor, and are greeted by a uniquely framed view of the landscape beyond the pool. The kitchen and living spaces offer expansive, panoramic views into the forest, and the bedrooms are angled to face the morning sun, each with its own exterior access. The 280sm house helps the residents disconnect from the world, by bringing them closer to their primary senses.

42%

AI

Perched on a steep slope, this 280sm building boasts breathtaking views of its surroundings. With three bedrooms and a pool, it offers a perfect balance of luxurious living and natural beauty. The exterior design of the building features a combination of concrete, wood, and glass, with a touch of steel, resulting in a harmonious blend with the environment. Inside, the upper level hosts the expansive living area, kitchen, and dining room, seamlessly integrating the indoors with the stunning outdoor views. The lower level features three serene and cozy bedrooms, including a master bedroom with a private balcony and an ensuite bathroom. The highlight of the building is the infinity pool located on the lower level, offering a perfect place to relax and unwind. This architectural masterpiece showcases a perfect harmony between nature and design.

58%



Why Studio Ghibli movies CAN 'T be made with AI?

- Studio Ghibli 吉卜力工作室



綠 荒地



蘇菲就是從荒地進入霍爾的城堡的。

藍 港町

霍爾用「詹金斯」這名字，在這裡幫居民調配魔法粉。



詹金斯家的門。



黃 蘇菲的家



在製作帽子的房間裡，蘇菲正在縫衣服。

黑 戰場



蘇菲和霍爾居住的王國正在打仗，霍爾變身成黑色大鳥在戰場上空飛行。



魔法門與外面的世界



轉完家之後，
轉盤的顏色
也變得不一樣。

哈達帽子店的建築物仍維持原樣。



城堡入口大門因為魔法的關係，可通往四個地點。轉動門把，門邊的圓盤便跟著轉動，然後依據指針所指的顏色變換地點。

看到美麗的花田十分感動的蘇菲，不知不覺間變回了少女。

紅 國王鎮

在王宮所在的城市，霍爾自稱「潘德拉肯」。




潘德拉肯家的門。蘇菲去見宮廷魔法師莎莉曼夫人和國王，莎莉曼夫人同時也是霍爾的老師。

粉紅 祕密花園

霍爾送給蘇菲的花田。田裡有間霍爾年少時住過的水車小屋。




A woman with dark hair and round glasses is speaking. She is wearing a white, textured sweater. The background is a warm, out-of-focus indoor setting with lights.

Studio Ghibli movies have a really special place in my heart they give me
吉卜力工作室的电影在我心中占有非常特殊的地位，它们给我

Movies from an architect's view



A woman with dark hair and glasses, wearing a brown top, is smiling and gesturing with her hands. She is holding a rolled-up document. The background is a warm, dimly lit room with a wooden cabinet and a lamp.

Hey, guys. Welcome back to the Channel.
大家好。欢迎回到频道。